

Prevailing torque type hexagon lock nuts

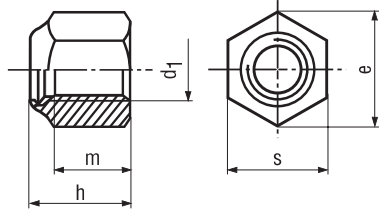
high type with polyamide insert

Tuercas hexagonales autofrenantes

forma alta con inserto de poliamida

外六角头尼龙锁紧螺母

厚型带尼龙



d ₁	h	e min.	s	m	d ₁	h	e min.	s	m
M5	6,3	8,79	8	4,4	M16	18	26,75	24	14,1
M6	8	11,05	10	4,9	M18	20	29,56	27	15,1
M8	9,5	14,38	13	6,44	M20	22	32,95	30	16,9
M10	11,5	18,9	17/16*	8,04	M22	25	35,03	32/34*	18,1
M12	14	21,1	19/18*	10,37	M24	28	39,55	36	20,2
M14	16	24,49	22/21*	12,1					

BN 164								
d ₁	☐ / ⚙	☐	d ₁	☐ / ⚙	☐	d ₁	☐ / ⚙	☐
M5	●	100	M12	●	100	M20	●	50
M6	●	100	M14	●	50	M22	●	50
M8	●	100	M16	●	50	M24	●	50
M10	●	100	M18	●	50			

Prevailing torque type hexagon domed cap nuts

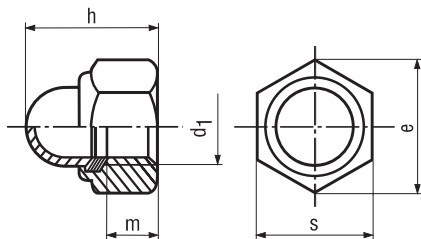
with polyamide insert

Tuercas hexagonales de sombrero autofrenantes

con inserto de poliamida

外六角盖型尼龙锁紧螺母

带尼龙



d ₁	e min.	s	m	h	d ₁	e min.	s	m	h
M4	7,66	7	2,9	9,6	M10	18,9	17/16*	8,04	18,1
M5	8,79	8	4,4	10,5	M12	21,1	19/18*	10,37	22,5
M6	11,05	10	4,9	12	M16	26,75	24	14,1	27,5
M8	14,38	13	6,44	14					

BN 167								
d ₁	☐ / ⚙	☐	d ₁	☐ / ⚙	☐	d ₁	☐ / ⚙	☐
M4	●	100	M8	●	100	M16	●	50
M5	●	100	M10	●	100			
M6	●	100	M12	●	100			

DIN 982	8
~ISO 7040	
Steel 8 Acero 8	
■ zinc plated blue / cincado pasivado azul	

DIN 982: Standard withdrawn
Estándar descatálogo

* Wrench size according to ISO on request

Anchos de llave conforme a ISO bajo demanda

DIN 986	6
Steel 6 Acero 6	
■ zinc plated blue / cincado pasivado azul	

* Wrench size according to ISO on request

Anchos de llave conforme a ISO bajo demanda